

impulses | Summer 2019

Rudolf Steiner House EVENTS

and Initiatives inspired by Rudolf Steiner
in and near London



Rudolf Steiner House 35 Park Road London NW1 6XT



Welcome to Rudolf Steiner House



Rudolf Steiner House Bookshop

Rudolf Steiner House

35 Park Road, London NW1 6XT

T: 020 7723 4400

www.rsh.anth.org.uk

[f.com/rudolfsteinerhouse/](https://www.facebook.com/rudolfsteinerhouse/)

Office

Opening hours

Monday to Friday 9am – 5.30pm

Tamara Allen

House Development Manager

E: tamara.allen.rsh@anth.org.uk

E: rsh-bookings@anth.org.uk

Doris Bailiss

Finance and Administration Manager

Membership Secretary

E: doris.bailiss.rsh@anth.org.uk

Ilona Pimbert

Communication and Administration Officer

E: ilona.pimbert.rsh@anth.org.uk

Bookshop

Opening hours

Monday to Friday 12 noon – 3pm,

4pm – 7.30pm. Saturday 10am – 5pm

E: rsh-bookshop@anth.org.uk

T/F: 020 7724 7699

Library

Opening hours

Tuesday, Thursday, Saturday,

12 noon – 2pm and 3pm – 7pm

E: rsh-library@anth.org.uk

T/F: 020 7224 8398

Café

Opening hours

Saturday 9am – 5pm

The Café can be opened at other times by request. Please contact the Office for further information.

Please note: All opening hours may vary during the summer holiday period from mid July – end of September. Please phone to check before coming in.

Receiving impulses

For an electronic version of this magazine contact E: ilona.pimbert.rsh@anth.org.uk

impulses team

Tamara Allen, Glenn Charles, Sibylle Eichstaedt,

Ilona Pimbert, Karen Glover Graphics

E: graphics@karenglover.co.uk

Please send your submissions to

E: ilona.pimbert.rsh@anth.org.uk

Deadline for submissions to the next issue

2nd September 2019

impulses

impulses is published termly by **Rudolf Steiner House** to bring to your attention the many initiatives, activities and events inspired by the work of Rudolf Steiner in and around London.

Rudolf Steiner (1861–1925), the Austrian philosopher and spiritual scientist whose body of research he named ‘anthroposophy’ – ‘the wisdom of the human being’ – was far ahead of his time. His concerns about the future of humanity gave rise to new insights and impulses in many fields of life. They are as innovative now as they were then, and have become even more relevant in the light of the unprecedented challenges humanity faces today. At the heart of Steiner’s research were the questions: What makes our endeavours truly human? How can we reconnect with our spiritual origin in ways appropriate for our time? How can we – individually and in human fellowship – reach our highest potential and live respectfully with all the other realms of nature? His ideas have influenced fields as diverse as meditation; personal, social and organisational development; education; agriculture; art and architecture; health and wellbeing; natural science; the performing arts; economics – to name a few.

You are warmly welcome to visit Rudolf Steiner House and be inspired by our varied programme, and enjoy our library, bookshop and café – or simply the peaceful atmosphere of the House, which has often been described as a special oasis in the hustle and bustle of the metropolis.

Rudolf Steiner House (RSH) and Theatre

RSH is the centre of the Anthroposophical Society in Great Britain, a registered charity. Apart from weekly study groups, talks, special events and concerts organised by the Society, our rooms and the Theatre are available for hire. For details please contact the office (see overleaf).

Unless otherwise stated, all events listed in *impulses* take place at Rudolf Steiner House.

When human beings meet together seeking the spirit, then they too find the way to one another – the paths from soul to soul.

Rudolf Steiner

Content

2	Welcome to Rudolf Steiner House	The Spirit of English 16
3	About <i>impulses</i>, Rudolf Steiner & RSH	Goethe’s Fairy Tale 17
4	Regular Events	17 Concerts
	Spirit in Action 4	19 Special Events
	More to Life 6	Seeds of Spiritual Renewal 19
	Study & Conversation Groups 8	Easter ■ Eurythmy Performance 20
	Friday Seminars & Lectures 10	Baby and Child Massage 21
	Art Talks 12	Rupert Spira 22
13	Workshops	When Budda met Christr ■ Omega Talks 23
	Mystery Drama 13	Resurgence Festival of Wellbeing 24
	Biodynamic Gardening 14	25 Therapies at RSH/Health & Wellbeing
	Eurythmy 15	27 Other Steiner Events in London and Beyond
	Acting 15	28 Steiner Waldorf Education
	Parzival 15	

Opinions expressed in this Newsletter are the responsibility of their authors. They do not represent the views of the Anthroposophical Society in Great Britain, as the Society cannot have an opinion, only individuals can.

SPIRIT IN ACTION

May – June 2019 on Thursday evenings 7.30 – 9pm

A series of seven evenings specially aimed at people in their 20s and 30s with an interest in spirituality, but all are welcome. Each evening will be a blend of teaching and activities based in Anthroposophy, a contemporary spiritual path created by Rudolf Steiner for people who want both to develop themselves spiritually and to help the world. Hosted by Alex Wright. You are welcome to attend all the evenings or your own selection.

Further info: www.rsh.anth.org.uk/spiritinaction Contribution: £10 (£8 students)

The Profundity of Fairy Tales

With Wim Wolbrink

2nd May

Fairy tales are not just entertaining stories for children, they carry insights into the depths of the human soul. Looking at some of Grimm's tales we will see what gifts they contain. We will also do some exercises, and by observing what we are actually doing during the exercises we will explore our own souls.

Wim Wolbrink is the director of the Dutch National Storytelling School. A storyteller and storytelling teacher for more than 20 years, he organises storytelling festivals and workshops mainly in Japan, Belgium, UK and the Netherlands. Through organising festivals, he brought thousands of people together around certain themes such as Freedom, the Threefold Social Order and Karma and Reincarnation. www.nationalevertelschool.nl

Esoteric Constitution – Your Seven Bodies

With Alex Wright

9th May

People are different, sometimes in obvious ways, others in ways less easy to define. We are much more than just our physical bodies. Come and hear about things that are real and fundamentally important about us to gain clarity on our non-physical aspects and how to help them thrive.

Alex Wright has an MA in Law from Oxford University, is a qualified Steiner Waldorf Class Teacher and a graduate of the three-year Emerson Visual Arts Course.

Making and Using the Biodynamic Preparations

With Aaron Mirkin

16th May

A talk with slides showing the making of the biodynamic preparations and describing the basic principles and practices of their use. In addition, there will be a brief overview of the principles and practices of good compost making and the application of the preparation. We will finish by making a biodynamic tree paste that participants can take home and use. To this end, participants should please bring along a one litre open container of some kind (lid is not essential).

After some years as a Chemical Engineer in the petroleum industry, Aaron worked as a farmer for nine years at a Camphill Community for adults with special needs near Cape Town trying to put biodynamic principles into practice. He now works as a priest of the Christian Community in Stroud but continues to make compost and use the biodynamic preparations wherever he can.



Human and Planetary Evolution

With Alex Wright

23rd May

As a highly developed clairvoyant, Rudolf Steiner was able to research the very earliest incarnations of both humanity and the planet. His very detailed report throws much light on spiritual processes underway in our solar system and gives us a picture both of the journey we as a species have made, as well as what lies in store for us in the future.

Alex Wright (see Bio on page 4)

Fundamental forces in Humanity and Nature

With Alex Wright

30th May

Anyone watching wildlife documentaries will be well aware of the evolutionary role played by lions on migrating antelopes. For humans the situation is subtler. Come and hear about some of the hidden factors which guide human life to help you gain insight in the journey of your life.

Alex Wright

Creating Spiritual Community to Meet Early Years Education and the Waldorf Movement in the 21st Century

With Hannah Roberts

6th June

How to build a sustainable Waldorf Kindergarten model which serves not only the young child but family and community too. A new way of working with money and building honest relationships in light of our current climate.

Hannah Roberts is the founder of Robin's Nest, an innovative and progressive Waldorf Kindergarten based on the grounds of Emerson college.

<https://www.robinsnest.org.uk/>

Wisdom of the Bees

With Christian Gruetzmacher

13th June

An exploration into the evolution of Honey Bee Culture from Adam and Eve to now and beyond.

In ancient cultures Bees were venerated as messengers of the gods, and the Egyptians sacrificed large quantities of bee products from their large-scale beekeeping in rituals but also used it in medicine and for mummifying. Now we dissect them and analyse them under the microscope and excel at the art of manipulative beekeeping. Is Honey Bee Culture throughout the ages mirroring the evolution of consciousness? And what will we do next?

Christian has lived with Honey Bees since 2006. His journey took him along various alternative and some conventional beekeeping experiences. He has focused on teaching about, designing, building and setting up hives and public gardens for Honey Bees.

At Oakbrook Farm Stroud he currently develops a public Bee-Observatory (bee-observatory.org).

MORE TO LIFE

Hosted by The Anthroposophical Society in GB

Tuesday evenings 7.30pm

THEME: SIGNS OF THE TIME

In this series of three talks, each speaker will address an important contemporary issue drawing on their life's work and the insights of Rudolf Steiner.

All welcome **Price: £8 (£6 concessions)**

Spirit and Architecture

With Richard Coleman

30th April

In this talk, Richard will reflect on architecture from a non-religious standpoint and explain why Rudolf Steiner's Anthroposophy has supported his understanding and experience of 'spirit' and its application in his collaborations with top architects on complex and sensitive designs in London, Dublin and Brighton.

For nearly 40 years Richard Coleman has lived with the imagination of a spiritual



dimension to life through personal experience, family life, interaction with community and nature and through his profession, architecture.

Who am I? & Who are you?

Questions of Gender Identity

With Andrew Wolpert

28th May

Gender dysphoria and gender fluidity are everyday topics in public culture, mainstream social studies, psychology and medicine. Open discussion of these phenomena is often inhibited by either dogmatic political correctness or no less dogmatic and indignant prejudice. How can we understand these prevalent issues of gender and sexuality in the context of spiritual science?

In the panorama of our unfinished human evolution can we discern in these phenomena a striving for individual identity, not just beyond culture, race, and religion, but also beyond gender? Can we recognise beyond the excessive sexualisation and hedonism of our modern culture, that there are spiritually striving individuals yearning

for human communion that does not conform to inherited norms?

Andrew Wolpert has worked at Emerson College, and at the University in Stuttgart giving courses, seminars and lectures on Renaissance Art, Shakespeare, Parzival, anthroposophical Christology and Gender Studies in Europe, Asia and Australia.



5G: Cause for Concern

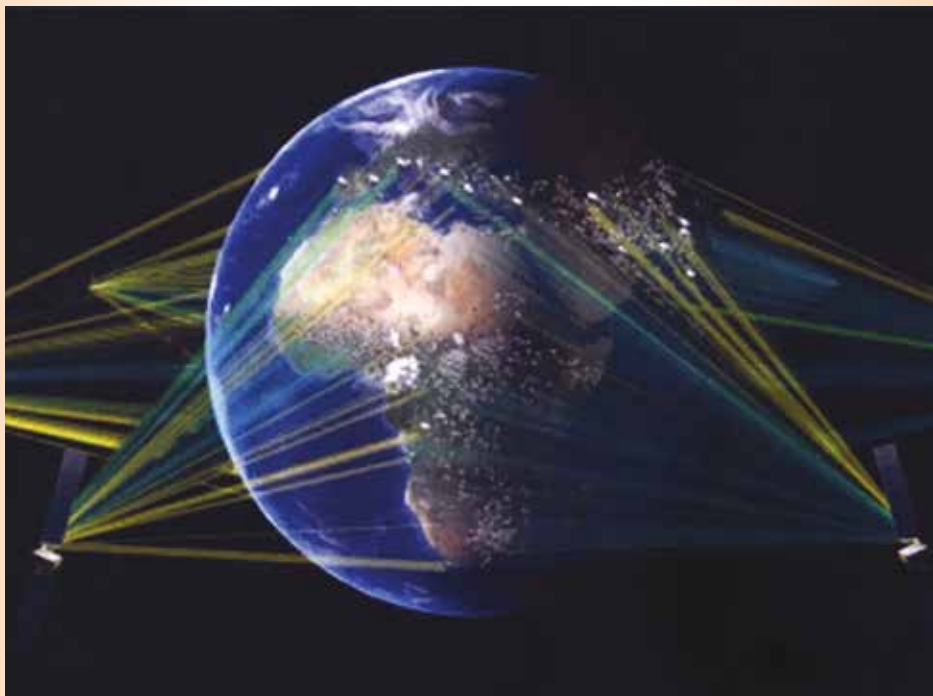
With Jeremy Naydler

25th June

Unlike previous generations of mobile networks, the next generation of wireless interconnectivity, referred to as 5G or “fifth generation”, is not just about enhancing existing technologies through faster connections and bigger data transfer capacity. It will require the constant irradiation of the Earth, both at ground level and from satellites in space, with extremely high frequency electromagnetic radiation. This new radiation blanket will be part of a coordinated global effort to establish an “electronic ecosystem”, planetary in extent, which will support the growth of artificial intelligence systems and the “Internet

of Things”, in order to create a so-called “smart planet”. In this talk, Jeremy Naydler will present reasons why we should be concerned and what, if anything, we can do to alleviate the impact of the ongoing technological revolution.

Jeremy Naydler, Ph.D., is a philosopher, cultural historian and gardener who lives and works in Oxford, England. He has long been interested in the history of consciousness and is also deeply concerned about the impact of electronic technologies on our inner life and on our relationship to nature. His most recent book, 'In the Shadow of the Machine: The Prehistory of the Computer and the Evolution of Consciousness', is published by Temple Lodge (2018).



STUDY & CONVERSATIONS GROUPS

MONDAY – WEDNESDAY STUDY GROUPS

ALL WELCOME to a single session or a whole series. No prior knowledge expected. We read and share reflections on anthroposophical themes with as much emphasis on listening as on speaking. Working together means we can experience much more than we would alone!

No need to book. Small donations towards expenses welcome: £3/£2

For more details, please email Adrian Hotten E: ssatrsh@virginmedia.com

Meetup website: www.meetup.com/rudolf-steiner-spiritual-science

MONDAYS

Karmic Relationships, Volume 1

With Trevor Dance

6th & 20th May; 3rd & 17th June

1st & 15th July 7.00 – 8.30pm

This profoundly esoteric series of lectures examines the underlying laws inherent in reincarnation and karma and explores, in detail, successive incarnations of specific historical figures. All are very welcome to join our lively group for this unique opportunity to study these revealing insights together.

Our summer programme offers the chance to join the group from the very beginning of the series, but newcomers are very welcome anytime.

The Temple Legend

With Dr Sue Peat and Adrian Hotten

13th & 27th May; 10th & 24th June

8th July 7.00 – 8.30pm

We will be continuing with the lectures given to members of Rudolf Steiner's first Esoteric School between 1904 and 1906. They throw light on the content of the picture-language of myths, sagas and legends. Pictures, Steiner explains, are the real origin of all things – the primeval spiritual causes. In order to work with pictures or symbols today we first need to become acquainted with their esoteric content. He gave these lectures as a necessary preparation for the planned second section of his Esoteric School,

which was to deal in a direct way with a renewal of ritual and symbolism. They clarify the history and nature of the cultic tradition including principally Freemasonry and its background, but also the Rosicrucians, Manichaeism, the Druids, the Prometheus Saga, the Lost Temple, Cain and Abel – and much else besides.

TUESDAYS

At the Gates of Spiritual Science

With Brendan McQuillan

21st May; 4th & 18th June

2nd & 16th July 7.15 – 8.45pm

These Stuttgart lectures are an extremely accessible introduction to the ideas and content of spiritual science and form an excellent and concise complement to Steiner's basic written works, such as *Theosophy* and *Cosmic Memory*. They cover the nature of the human being, the three worlds, life after death, karma, the evolutionary epochs, and the path of inner development.

WEDNESDAYS

The Riddles of Philosophy

With Trevor Dance

8th & 22nd May; 5th & 19th June

3rd & 17th July 2.00 – 4.00pm

The group continues with our study of this Steiner masterwork in which he affords the reader lofty insights into the ideas of western philosophy and the underpinnings of anthroposophy. Much more than a straightforward history, the book penetrates

the spiritual impulses themselves which underlie the works of the great thinkers. Now is a good time to join us as we examine the ideas of the nineteenth century philosophers and thinkers like Darwin who still influence people today. No prior knowledge of the book is required.

Background to the Gospel of St Mark

With William Bishop

**May 15th & 29th; June 12th & 26th
July 10th 2.00 – 4.00pm**

We will be continuing with these lectures by Rudolf Steiner from 1910 – 1911. They give a wide-ranging context for a deep understanding of the profound truths in the Gospel according to St. Mark.

The Spiritual Beings in the Heavenly Bodies and in the Kingdoms of Nature

With Brendan McQuillan

**May 22nd; June 5th & 19th
July 3rd & 17th 4.15 – 6.00pm**

These lectures from Helsinki encompass the intimacy of the elementals all the way to the sublimity of the Seraphim and consider the relationships of the spiritual beings of the hierarchies to individual planets and their moons, to the sun and to comets. All set against the cosmic backdrop of other solar systems, and in the context of the reciprocal natures of human being and cosmos.

With the help of sketches and selected readings we will take a detailed look at the cosmic relationships of the various spiritual beings.

Essential Steiner – A Reading and Conversation Group

With David Lowe

**Wednesdays Weekly from May 8th
until July 10th 7.15 – 8.45pm**

One of the most essential of Steiner's lectures and not just for teachers, is the second lecture of the series entitled *The Study of Man*, given as part of the preparation for teachers of the first Waldorf school in Stuttgart. It explores in a comprehensive way the relationship between our thinking, our feeling, and our life of will. This is central not only to a healthy view of the human being but is the key to how we can deal with the unhealthy social life of our time. This lecture provides the cornerstone of our theme for the term.

Psychology – A Summer Reading and Conversation Group

With David Lowe

**Wednesdays Weekly from July 17th
to Aug 7th and Sept 4th to 25th
7.15 – 8.45pm**

Regular members of the Wednesday group – Adam, Fateh, Jenny, Michael, and Simon – along with others, will make contributions to the theme. The subjects will include: Benefits of Meditation; Psychology and the Occult; Spiritual Science and Psychology.

Each week we will read a passage from Goethe's *Tale of the Green Snake and the Beautiful Lily*.

Further information will be available at the end of June, please check the RSH website.

SATURDAY CONVERSATIONS AND STUDY

Exploring Anthroposophy

Saturdays every 3 weeks

**13th April, 4th May, 25th May,
15th June, 6th July 2.30pm – 3.30pm**

Join us for conversation and study on anthroposophical themes. The aim is to cultivate a deeper understanding of the

foundations of anthroposophy through discussion, short presentations and exercises. Meetings will be held in the foyer of RSH and are open to all.

For further information please contact
Glenn Charles E: glenn.charles@gmail.com
M: 07554 000 280

FRIDAY SEMINARS AND LECTURES

7.00–8.30pm at Rudolf Steiner House

COMMUNITY

We could consider that the real reason for us, as spiritual beings, incarnating into physical bodies is that we meet each other. We all belong to communities of relatives, friends, specialist interest groups and of course the community of the human race.

During this series of seminars we will consider how we can develop a deeper understanding of our connections with each other.

All welcome! Suggested donation £5.00 / £3.00

For further information please see meetup.com/rudolf-steiner-spiritual-science

The Family

With Julia Dvinskaya

17th May

How can we work with family bonds in a time when the concept of 'family' becomes ever more complex? Do we choose our 'family' as part of our pre-birth intention? What do we have to do with each other, even across several generations, and is there a formula for a good family community? Looking at who we are in our family, in its past, present and future, is helpful for understanding our life tasks. Julia will illustrate her talk with experience gained from working as a counsellor.

Julia Dvinskaya Dip.Biog.Counselling, Reg. MBACP (Accred) offers biographical counselling and biography work in the London area. She gives talks and seminars to the general public and professionals'. www.mylifeandcounselling.com

The Scientific Community

With Dr. Simon Pelling

24th May

As well as our social circle at one end of the scale and the nation at the other, we belong to institutions such as companies and societies. What does Steiner have to say about, in particular, the scientific community and its effect on scientists and civilization since the 19th century? Science is a very self-confident and disciplined profession and, like the church in the middle ages, it has

the 'true faith' and dominates and unifies intellectual life. Why is it so successful, what is its character and outlook, can we get a perspective on it, why is it so hostile to alternatives and what is the ultimate purpose of the collectivity of scientists?

Simon Pelling has a PhD in theoretical physics. He has worked as an electrical engineer and maths lecturer. He has a long term interest in Rudolf Steiner's work and the link between earth mysteries, spirituality and science.

Freedom and Friendship: Society in a Material World

With Angus Jenkinson

31st May

Each individual is in search of their own individuality and freedom of self-expression. But if we take the wrong route we end up divided. When we project our isolation into the world we create a world of isolation which reflects back upon us. Drawing on such diverse themes as the Grail legend, Facebook, the jewelled net of Indra, and Steiner's philosophy of thinking, it weaves a picture of the challenge and opportunity of contemporary community. *Angus Jenkinson is a business leader, independent research scholar, photographer and author of several books. He is currently developing a new theory of organisations.*

A Michaelic Approach to Community

Denise Gell and Adam Slowikowski

14th June

Is there a new and ideal way to build community? The evening will begin with Denise leading us into an experience of harmonious community. All are welcome to watch or join in as we form a community following the gentle movements of eurythmy. Adam will outline Rudolf Steiner's insights into the concept of a threefold Michaelic community and how this contrasts with the communities we are part of in present day society.

Denise Gell is a eurythmy therapist who has taught and performed eurythmy in a variety of settings for over 20 years. She offers eurythmy therapy on a one to one basis. Adam Slowikowski has a major interest in psychology. For enquiries text Denise on 07 904 858 081

Earthly and Cosmic Community – Today and for the Future

With Eric Klein

21st June

Community building as an artistic, musical, creative endeavour is essential for the future evolution of humanity. This is a community that includes the spiritual beings who have created us and stand fully behind our development. It is only in community that beings of the higher hierarchies can find us and join us. This must by necessity be a creative activity in all its aspects. Recognising, loving and trusting the activity of spiritual beings who offer themselves in sacrifice for our wellbeing leads us to a profound experience of gratitude and gives us insights into how the future can be formed.

Eric Klein was born in the USA and studied music. He is a violinist and teacher with a particular interest in the development of human thought.

Materialism, Social Process and Mental Health

Dr. Pablo Jeczmiem

28th June

Increased use of technology has had a dramatic effect on how we relate to each other. We now often 'meet' on Skype and have 'friends' on social media that we have never physically met. Often internationally known individuals share intimate details of their lives with millions of 'followers'. The effect of excessive use of social media on social process and mental health is becoming well known – having both anti-social and social consequences. Pablo will explore how the insights of Rudolf Steiner can help us understand and work with the effects that increasing materialism is bringing to the world.

Dr. Pablo Jeczmiem is a consultant psychiatrist and anthroposophical psychotherapist working within the NHS and privately. He has a comprehensive knowledge of anthroposophic medicine.

The Individual in Community

With Graham Kennish

12th July

There is an inherent tension between individuality and 'togetherness', whether by way of intimate relationships, family constellations, professional groupings or in spiritual and social communities. As individuals in any community, that tension can become a fruitful path towards selflessness, love and inner freedom, or spiral into dependency, domination and even cult-like obedience. Graham engaged with many of the spiritual and self-development paths of the 60s, entered Waldorf teaching, family life and something of Camphill. These experiences enabled him to develop a deeper understanding of Rudolf Steiner's image of the inner life of soul which he will share.

Graham Kennish gives workshops in Goethean Psychology, teaching a practical observation of the soul through gesture, by which an individual can strengthen the power of Empathy, the faculty by which we can enter more deeply, but more freely, into community relationships.

Working in Community with the Spiritual World

With Philip Martyn

19th July

How do we work with our Angel, the dead and nature spirits?

We are always surrounded by a whole host of spiritual beings that we usually do not see because our eyes are for the physical world. None the less, these beings influence us and our surroundings. Working with the insights Rudolf Steiner gave Philip Martyn will describe these beings and give examples of how we can develop an understanding of them and work in community with them.

Philip Martyn is a retired lawyer, who served on the council of the Anthroposophical Society in Great Britain and as Co-General Secretary

MONTHLY ART TALKS

with David Lowe

7.30–8.45pm

This series of illustrated art talks draws on the insights of Rudolf Steiner to deepen our appreciation of the significance of great works of art.

All welcome! No need to book. Suggested donation £5.00 / £3.00

Leonardo, his Paintings and Drawings

10th May

We will be looking closely at many of Leonardo's paintings and sharing our observations and thoughts. We will also look at some of his drawings. Not only figure drawings and drawings from nature, even his engineering drawings are works of astonishing beauty, such as his observations of water flowing through a weir.

Leonardo's Life and Work

7th June

What do Leonardo's life and work tell us about his previous incarnations? The inspirational role he played for so many artists in the Renaissance including Bramante, Michelangelo and Raphael, and the respect in which they held him, gives us a different way to approach Rudolf Steiner's comment that behind Leonardo and working through him was one of the

greatest initiates of all time. We will try to unravel some of the mysteries behind the personality who lived from 1452 to 1519.

Ruskin and Turner

5th July

In this anniversary year of Ruskin's birth, it may be appropriate to consider the importance of his relationship to Turner in the wider context of his life. Ruskin championed Turner's work at a time when it was losing favour with critics and public alike. He ushered in the final and greatest period of Turner's work which is still not fully understood. We will read from Ruskin's writings and show the paintings referred to. Ruskin's words can still help us to find a way in to the paintings such as few other commentators on Turner can do. An introduction to Ruskin's life given by Simon Pelling will begin the evening.

MYSTERY DRAMA READING

With Trevor Dance

Saturday 8th June 2.00 – 6.30pm

All welcome, no need to book.

£5.00 / £3.00

Steiner's dramas are primarily teaching vehicles and he expected us to work with the plays. Such work gives us a deep insight into the working of reincarnation and karma and shows us the workings of Lucifer and Ahriman and the threefold nature of the soul forces, in our thinking, feeling and willing.

Trevor Dance is an experienced facilitator of the Mystery Drama readings at Steiner House. A writer and printmaker with an extensive interest in the arts.

For further information and bookings

E: trevordance@hotmail.com or

T: 020 8908 0391

AN INTRODUCTION TO GARDENING THE BIODYNAMIC WAY

With Dr Sue Peat and Philip Martyn

Sunday 23rd June 2.00 - 5.00pm

All welcome, no need to book.

£10.00 / £ 5.00

Biodynamics is an organic method of cultivation, arising out of Rudolf Steiner's spiritual research. It works with the rhythms of the movements of the sun, moon, planets and stars to which the plants respond. The workshop will cover the background to the biodynamic planting calendar, composting and the biodynamic preparations. Participants will be invited to exchange seasonal gardening tips, ideas and experiences. For the last hour we will stir the horn manure preparation (known as 500), so bring an empty screw top bottle if you want to take some home. A 500ml bottle is enough for an average garden. The workshop is suitable for those new to biodynamics and for anyone who would like to give their garden, window boxes or house plants a summer treat!

Philip Martyn and Dr Sue Peat are long term students of Rudolf Steiner. Philip is a retired lawyer and has previously served as co-general secretary of the Anthroposophical Society in Great Britain. Sue is a medical consultant at Kings College Hospital.



BIODYNAMIC MARKET STALL AT RUDOLF STEINER HOUSE

EVERY SATURDAY 10am – 2pm

Please note our Summer break will run from Saturday 20th July to Saturday 31st August

The BD stall has been joined by Noel, a nutritionist with great knowledge of the light root (*dioscorea batatas*) who has been helping Kenny by bringing the most amazing produce from Laines Farm in Cuckfield. Produce includes leeks, Jerusalem artichokes, carrots, black radish, cavolo nero, kale, golden and purple beetroot, chioggia, white radish, kohlrabi, parsnips, red cabbage and apples.

We also have haloumi, cheddars and the "best yoghurt I have tasted" from Plaw Hatch; eggs, wonderful apple purees, juices, syrups, cordials, fermented fennel and sauerkraut from Brambletye. We have hand milled flour from Brockman's Farm, and from Shire Farm we have their delicious apple juice and highly nutritional aronia berry juice, as well as rye and spelt flour. We

look forward to seeing you at the stall from 10am to 2pm every Saturday.

Penny Tyler and Kenny Coffey
E: belikeabird@gmail.com
M: 07957 799 336



Left to right: Kenny, Noel, Penny

WORKSHOPS

EURYTHMY

Arts for Wellbeing

EURYTHMY WORKSHOPS

With London Eurythmy
**Saturdays 11th and 18th May,
1st and 8th June 1.30 – 2.30pm**

Energise and reduce stress with Eurythmy, a movement art linked with music and poetry. Get to know this gentle, restorative and harmonising art and enhance your wellbeing by joining our introductory workshops. All welcome! £7

STUDIO PERFORMANCE

With London Eurythmy
Saturday 18th May 6.15 – 7pm

Catch a glimpse of Eurythmy as a performing art in our short Studio Performance. Find out what lies behind it by joining an informal Q&A session. All welcome.



Donations at the door. For more information on both events:

E: diana_constantin@yahoo.com

To find out more about Eurythmy please visit <https://eurythmymovement.uk/> and <https://m.facebook.com/pages/category/School/London-Eurythmy-70637358856/>

ACTING

EXPLORING MICHAEL CHEKHOV'S APPROACH TO ACTING

With Sarah Kane

2nd June: Movement and Creativity

9th June: Imagination and Creativity

23rd June: Creating Character

2.30 – 5.30pm

Sarah Kane met Chekhov's approach at the start of her performance training; she

has been teaching, training and directing professionals using the technique since completing the training.

£40/£30 concessions per workshop

All 3 workshops booked in advance, £100 / £80 concessions

For information and bookings E: info@performingartsintl.org or

T: 01 342 824 261 / 07 772 091 429

MISCELLANEOUS

PARZIVAL STUDIES

With Josie Alwyn, Simon Blaxland-de Lange, William Forward, Steve Roberts, Andrew Wolpert

Sunday 28th July 11am – 6pm

We met in December 2018 to share questions and aspects of our ongoing work with Wolfram's epic. Some of the themes we looked at were Parzival's horses, the identity of Ither and of Gramoflanz, what it means to be a virgin-widow, the significance of the moment Parzival hears about his brother, the connection to Manes, the need for new Waldorf Upper School teachers to be guided into this work, and how this epic has influenced modern literature. We felt we had begun something worthwhile

that might be of wider interest, and decided to hold an open seminar in July for all those interested in joining us in this deepening shared work. We invite whoever may be interested to let us know of their intention to participate and to indicate what

area or theme of the work they are currently involved in and would like to speak about. This will enable us to construct a programme in advance to make best use of our time.

For more information, please get in touch E: andrewjwolpert@gmail.com



THE COMMUNION OF EROS AND THE COMMUNION OF THE LOGOS

A Day Seminar with Andrew Wolpert

7th September 11am – 6pm

Gender dysphoria and gender fluidity are everyday topics in public culture, mainstream social studies, psychology and medicine. Open discussion of these phenomena is often inhibited by either dogmatic political correctness or no less dogmatic and indignant prejudice. How can we understand these prevalent issues of gender and sexuality in the context of spiritual science?

In the panorama of our unfinished human evolution can we discern in these

phenomena a striving for individual identity, not just beyond culture, race, and religion, but also beyond gender? Can we recognise beyond the excessive sexualisation and hedonism of our modern culture, that there are spiritually striving individuals yearning for human communion that does not conform to inherited norms?

Questions of gender identity arise now for many people in the wider context of experiencing a kind of "homelessness" in terms of family, nationality, religion and ideals. The significance and consequences of the division of the sexes, the way masculinity and femininity come to expression in the soul, the nature of the

human reproductive process and the human urge for creativity, the connection between Eros and the Logos, the forces of reproduction and the creative potential of language are all relevant considerations in this field of study.

Andrew Wolpert has worked at Emerson College, and at the University in Stuttgart

giving courses, seminars and lectures on Renaissance Art, Shakespeare, Parzival, anthroposophical Christology and Gender Studies in Europe, Asia and Australia.

Price: £15 (£10 concessions)

If you have any questions, please contact
E: andrewjwolpert@gmail.com

THE SPIRIT OF ENGLISH

THE MATTER OF BRITAIN AND ITS DESTINY

THE HERITAGE OF ARTHUR AND THE POTENTIAL OF THE KNOWLEDGE OF THE GRAIL

With Andrew Wolpert

29th July – 2nd August , 9am–4pm each day at Rudolf Steiner House

What secrets lie in the rocks, the hills, the caves, the valleys, the forests, and the rivers of Britain? What traces of the ancient, Irish culture and the Hibernian Mysteries can we discern in our yearning now to know the meaning of life and of our lives? How do the megalithic monuments, the Celtic heritage and legends of Arthur live in our consciousness? What does Blake mean when he asks if those feet in ancient time walked on our mountains green? Why was it to Britain that Joseph of Arimathea brought the cup that had sustained him? What happened to the Celtic Soul while the Romans occupied this island? What is this distillation of so many languages that became the English we know today? Why did materialism take such root in England? What were the themes that Rudolf Steiner spoke about during his visits to England? How do the present political and narrow-minded nationalist interests constrain a vision of what our island identity is? Why did you choose to be born wherever you were born? What does the land of your birth give you, and what is it waiting for from you?

The fallen nature of language and maybe particularly of English, the seemingly

unavoidable pervasiveness of materialism, and developments such as nanotechnology and transhumanism do indeed threaten our unfinished human evolution. All this, together with the exploitation, brutality, injustice, oppression, discrimination, suffering and want that are visible everywhere on a global scale are severe challenges to a not-yet-lost vision of what the human being can be and how we can live together. That vision lives as an attainable reality in what Rudolf Steiner described as Knowledge of the Grail, a term he used again and again at the end of his book Occult Science, synonymous with what anthroposophy can become when we live it. The metamorphosis of Britain's Arthur and his reflective relationship to the Sun is our world responsibility actively to bring about a new relationship between the Earth and the Sun.

This Summer Course will be an opportunity to work together on all of these themes.

Fee: £400

For details (incl. info on a later trip to Arthurian sights), applications & help with finding accommodation please contact
E: andrewjwolpert@gmail.com

Exploring Goethe's Fairy Tale *The Green Snake and The Beautiful Lily*

With Robin Blackmore
Wednesday 21st August 2019
10.30am – 4pm

Robin introduces the story and context in which it was written. Through handscripts, props and reflection he enables participants to explore scenes and experience being key characters relevant to the present day.

Prior knowledge of the Tale is not necessary. Being research, there is no fee or need to book.

Robin has been exploring Goethe's 'Fairy Tale The Green Snake and The Beautiful Lily' for ten years. He is passionate about the learning it bestows.

This event is open to all and free of charge.

For further information please contact:

E: robinlivingspeech@gmail.com or

M: 07885 214 317



Painting by David Newbatt

INTERNATIONAL CONCERT SERIES

KEYBOARD CONVERSATIONS With Jeffrey Siegel

Sunday 19th May 4.00pm

THE ROMANTIC CONNECTION - SCHUMANN, LISZT & CHOPIN

Each event comprises informal commentary on the music and its composers, a full performance of each work, and concludes with a short Q & A session with the audience. This accessible format enriches understanding of classical music for newcomers and seasoned listeners alike.

The programme includes Schumann's passionate 'Fantasy', Liszt's 'Liebesträume' and Chopin's fervent Polonaise

TICKETS: Full price £18 / Concessions £14

For programme details and online bookings please visit
www.internationalconcertseries.com/whatson.html

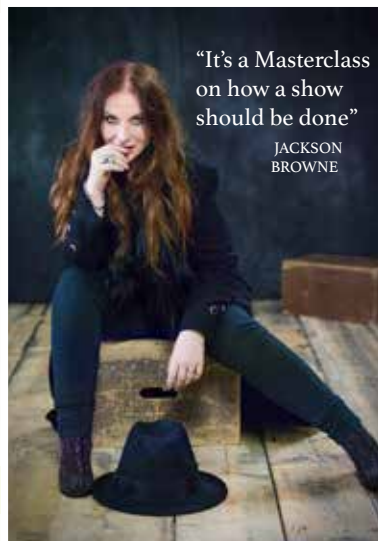


Marylebone Music Festival

Thursday 20th June, 7:30pm
Rudolf Steiner House Theatre

Judith Owen
Welsh singer-songwriter,
pianist and entertainer.

Tickets £15 - www.marylebonemusicfestival.com



"It's a Masterclass
on how a show
should be done"

JACKSON
BROWNE

FULL PROGRAMME

Tuesday 18th June

7:30pm Spanish Place

Royal Academy of Music String Quartets

Free Event

Friday 21st June

11am Wigmore Hall

Peter & the Wolf

£4 per child, Adults Free.

7:30pm Wallace Collection Gallery

Chamber Music Concert

Henry Moore: Sculpting Musical Friendships

Britten, Stravinsky, Tchaikovsky

£25, £20

9pm Wallace Collection Restaurant

Marylebone Music Festival Banquet with Festival Artists

£45 includes a three course dinner including wine

Saturday 22nd June

12:30pm Regents Park Band Stand

Barbershop-o-gram

Free Event

7:30pm Hellenic Centre

*Rick Wakeman: A Musical Journey with Sue Perkins
and The Marylebone Music Festival Choir.*

£25, under 18s £10.

Sunday 23rd June

2:30pm Manchester Square

The Royal British Legion Band

All refreshments in the garden are free,
including Champagne & Marylebone Gin

£20, under 18s £5

To buy tickets & more details please visit www.marylebonemusicfestival.com
All proceeds from the Festival go to charity, The West London Mission

INNER LIGHT AND STRENGTH

NURTURING SEEDS OF SPIRITUAL RENEWAL

Summer Conference

of the Anthroposophical Society in Great Britain

31st July – 4th August 2019

at Emerson College, Forest Row, East Sussex

Everyone Welcome!

Following last summer's conference, in which we took a deep look at the threat to our humanity which artificial intelligence poses, we are planning this year to focus our attention on that which we can do as individuals to create a counterbalance.

How can we cultivate inner light, engender inner warmth and find our inner strength? How can we become inwardly more active, practising a kind of 'inner activism' in the face of the challenges of our times? And finally, how can this become the basis for a stronger community life?

This year our speakers will be Dr James Dyson, Marah Evans, Jeremy Naydler and Ian Trousdell. As usual, there will be talks, artistic workshops, workshops on various aspects of the inner path, small group conversations, and plenty of opportunity for encounters and for enjoying the lovely campus of Emerson College.

The full brochure will soon be available from Rudolf Steiner House and Emerson College and can also be downloaded from their websites.

For details and bookings please contact
Emerson College, Forest Row, East Sussex RH18 5JX

T: 01342 822 238 or 01342 826 055

E: bookings@emerson.org.uk



Easter Festival

Good Friday
19th April
7.30 - 9.00pm
 Death and Resurrection
 The Passion and Suffering of Christ
Talk by Peter van Breda

Easter Saturday
20th April
4.30 - 5.30pm
 The Encounter with the Sub-Earthly Realms
Talk by Rick Maxon
6.00 - 7.30pm
 From Winter to Spring - from death to life
 Poetry and Music performed by
*Christopher Kidman (speaker) and
 Fabian Lochner (piano)*

Easter Sunday
21st April
2.00 pm Eurythmy for Easter
2.30 - 4.00pm
 The Heart - the forces of death and life working within us
Talk by Dr. Peter Gruenewald

Eurythmy Performance

The White Winds of the World

Presented by graduating students from Dornach, Switzerland: Aeri Lee, Elizabeth Davison, Isabel Chiaravalloti, Maria Radyushina and Raphael Seefried

Saturday 1st June 7.30pm

We are looking forward to meeting you and sharing our tales, our music with you! Our elemental, colourful, varied programme includes silent Celtic forms, Limericks, The Rune of the Four Winds by Fiona Macloaid, A Hymn to Orpheus, modern lyrical poems, a Grimm's tale about The Pack of Raggamuffins and music by Bach, Beethoven, Rachmaninoff and Debussy and an Irish Song.

This group will perform throughout England, Ireland and Scotland this summer.

All welcome! Tickets available at the door, £7, £5 concessions.

For more information, please visit Special Events: www.rsh.anth.org.uk/whats-on/special-events/ and/or contact Raphael Seefried E: raphaelseefried@icloud.com

T: 01342 824000



baby & child massage^{UK}

**'Babies needs are simple. They need warmth
for the heart, and warmth for the body.'**

Rudolf Steiner

Become an infant massage instructor with the International Association of Infant Massage. The most fulfilling work, contributing to a better world.

Training is at Rudolf Steiner House in London with Sylvie Héту - International Pioneer, Parent Lecturer, Author, Poet and Anthroposophist.

13th-16th May 2019

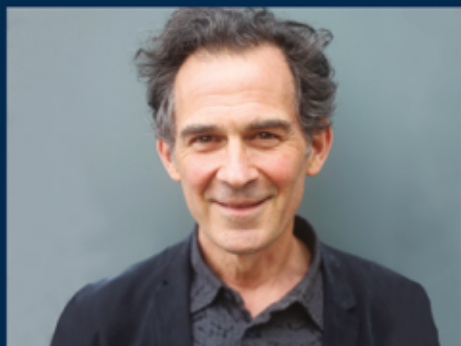
29th Oct-1st Nov 2019

Book now by contacting Mary:
mary@babyandchildmassage.co.uk
07528 589 859
www.babyandchildmassage.co.uk



Rupert Spira

The Essence of Non-Duality



“Meditation is what we are, not what we do; the separate self is what we do, not what we are.”

2019 Evening Meetings at Rudolf Steiner House

£10 admission – online booking recommended due to high demand

Friday 5 April 7pm – 9pm

Friday 10 May 7pm – 9pm

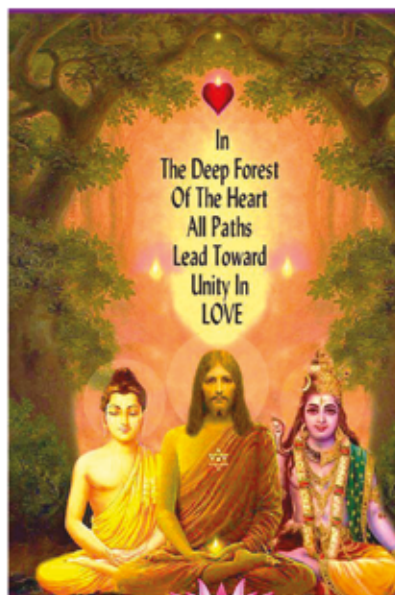
Friday 7 June 7pm – 9pm

Friday 5 July 7pm – 9pm

In his meetings, Rupert explores the perennial, non-dual understanding that lies at the heart of all the great religious and spiritual traditions, such as Advaita Vedanta, Kashmir Shaivism, Hinduism, Buddhism, mystical Christianity, Sufism and Zen, and which is also the direct, ever-present reality of our own experience.

This is a contemporary, experiential approach involving silent meditation, guided meditation and conversation, and requires no affiliation to any particular religious or spiritual tradition. All that is needed is an interest in the essential nature of experience, and in the longing for love, peace and happiness around which most of our lives revolve.

For full details: www.rupertspira.com Enquiries: niya@rupertspira.com



DONATION AT THE DOOR

CONFERENCES & MEDITATION

WHEN BUDDHA MET CHRIST

FRIDAY 3rd & 10th MAY 2019: 6.30 pm – 8 pm

Limited spaces available please register via:

SMS 0777 533 1972 info@essenenation.co.uk

What would Jesus say to Buddha, or how would Buddha relate to Christ? This is an answer from an Esoteric (Mystical) Christian perspective. The Essene tradition, at one time synonymous with the Cathars and protected by the Knights Templars, has a rich history which reaches back into antiquity, predating the birth of Jesus. With deep roots in Paganism and the old Mystery traditions it is ideally placed to join the dots, and bring two great Spiritual streams together in union.

Loic Albisetti is a direct student of Essene Master (Living Buddha) Olivier Manitar, who himself counts Rudolf Steiner as one of his foremost teachers. Loic is delighted to be coming to Steiner House, a home of the teacher of his teacher.

Venue: Rudolf Steiner House, 35 Park road, London, NW1 6XT
Nearest tube station: Baker street

For upcoming events near you follow us on Facebook



Essene Nation



EsseneNation.co.uk

WORLD UNIFICATION PROGRAMME
OMEGA TALKS SERIES - 2019
Call To Friendship Association

each month a new FREE TALK
at three different locations in London

We are three cosmic sisters, **Elena, Milena and Tasneem**, dedicated to spreading the frequency and knowledge from the 19th Evolution Dimension (Omega Dimension) and merging it with the existing planetary knowledge.

Omega Dimension has opened its frequency and information treasures to our planet, for the first time, through *The Knowledge Book*.

With our interdisciplinary approach tailored even for a layperson, we aim to:

- **INSPIRE** a holistic outlook on life that takes into consideration science, art, philosophy, spirituality and personal experiences;
- **ENCOURAGE** a holistic thinking, and capacity to see the bigger picture and the life on Earth from a cosmic perspective;
- **EXPAND** our awareness and consciousness bubble, hence support our wellbeing and evolution;
- **PROMOTE** the need for unification of humanity.

TOPICS

Our monthly talks are inspired by the specifics of the energy of each month. Hence, only at the beginning of the ongoing month (by the 5th of each month), we can tell you the topic of that month's talk.

To give you an idea of the topics we choose, here are some talks we delivered in 2018:

THE WILL and its FREEDOM: DRUGS and OUR EVOLUTION;
ASCENSION - MYTH or REALITY; GOOD and BAD EGO;
DARWINISM and BEYOND; ORIGIN of CREATIVITY;
WHAT IS LOVE; DEEPER MEANING of SOUND.

AFTER EACH TALK, WE SOCIALISE and CONTINUE CONVERSATION ON THE TOPIC and BEYOND.

TALKS FOR 2019

THURSDAYS, 7pm, Rudolf Steiner House, NW1 6XT:
25/04; 23/05; 27/06; 25/07; 29/08; 26/09; 24/10
ELENA - 07428 853358

MONDAYS, 7pm, The Pirate Castle, NW1 7EA:
29/04; 13/05; 26/06; 29/07; 26/08; 23/09; 21/10
MILENA - 07808 222958

WEDNESDAYS, 7pm, Epping Forest Hotel, IG8 9NY:
24/04; 29/05; 26/06; 31/07; 28/08; 25/09; 23/10
TASNEEM - 07739 710120

CONTACT

For more details on each month's talk, please visit our MeetUp group 'MULTIDIMENSIONAL FRIENDSHIP PROJECT LONDON': www.meetup.com/Multidimensional-Friendship-Project-London

We look forward to greeting you in person.

Resurgence

FESTIVAL OF WELLBEING

HEALTHY PEOPLE • HEALTHY PLANET

Saturday 2 November 2019

Rudolf Steiner House, 35 Park Road, London NW1

CONFIRMED SPEAKERS SO FAR INCLUDE

Marjatta van Boeschoten

General Secretary of the
Anthroposophical Society in Great Britain

Herbert Girardet

Co-founder of the World Future Council

Satish Kumar

Editor Emeritus, *Resurgence & Ecologist*

Lord Smith of Finsbury

Master of Pembroke College Cambridge

Isabella Tree

Author of *Wilding - the Return of Nature
to a British Farm*

Raynor Winn

Award-winning Author of *The Salt Path*



Marjatta van
Boeschoten



Herbert Girardet



Satish Kumar



Lord Smith of
Finsbury



Isabella Tree



Raynor Winn

**For updates and further information visit:
www.resurgence.org/festivalofwellbeing19**

THE THERAPY AND WELLNESS CENTRE AT STEINER HOUSE

The Therapy Centre at Rudolf Steiner House is run by qualified therapists, doctors and practitioners. Our work is based on an anthroposophical understanding of health and illness, and we work out of strong ethical principles. We try to understand not only what makes someone unwell or in need but also what leads a person back to wholeness and wellbeing.



Anthroposophic Medicine

Dr Peter Gruenewald *CAHSC reg.*

For further information:

www.londonintegratedhealth.co.uk

M: 07898 650 182 or E: epi@londonintegratedhealth.co.uk

Dr Jenny Josephson

For further information

T: 01342 824422 or write: 21 Hartfield Road, Forest Row,
East Sussex RH18 5DY



Artistic Therapy (children and adults)

Anniek Verholt, (AATA, CAHSC reg.)

Anniek works in private practice; she also meets clients via Skype. After more than 17 years, she has developed a unique way of working which combines counselling and coaching techniques with a holistic therapeutic approach using mindfulness and creative expression.

For further information: www.artstherapylondon.co.uk

M: 07717 525782 or E: info@artstherapylondon.co.uk



Counselling

Julia Dvinskaya Reg. MBACP (Accred)

Julia is a biographical counsellor with several years of experience working with people struggling with relationships, life turning points, stress, crisis, anxiety, loss, uncertainty, confidence and other questions of finding strength to face their life challenges. Julia also facilitates biography work in groups.

For further information www.mylifeandcounselling.com

M: 07939 011508 or E: juliadv@counsellor.com



Psychotherapy and Counselling

John Lees UKCP reg, BACP Snr accredited, CAHSC reg.

John offers individual anthroposophic psychotherapy and counselling for the effects of trauma, anxiety, depression, life crises, incarnation problems and psychosomatic problems. He is trained in anthroposophic psychotherapy and leads the training course in anthroposophic psychotherapy at Emerson College. He has worked as a therapist for 28 years and as a clinical supervisor for 22 years.

For further information www.johnleestherapy.com

M: 07931 319 454 or E: fjohnlees@aol.com



Physiotherapy and Rhythmical Massage

Anna van Zelder Chartered Physiotherapist MCSP, HCPC registered & Rhythmical Massage Therapist MRMTA

Anna has a special interest in pain management and rehabilitation and offers physiotherapy from a holistic perspective. She works with an integrated approach, which means Rhythmical Massage and/ or 1–1 Pilates Rehabilitation could be incorporated where appropriate or could also be applied as separate therapies.

For further information www.annavanzelder.com

M: 07789 852 378 or E: info@annavanzelder.com



SKIN CARE – Dr Hauschka

Elaine Sadler is an award-winning health and beauty therapist, working as a Dr Hauschka Esthetician & Holistic Therapist.

Elaine won Therapist of the Year 2009–2010 at the Professional Beauty Awards where she used Dr Hauschka treatment and products in all entries. The Dr Hauschka body and face treatments are restoring, harmonising and rejuvenating experiences.

For further information M: 07890 668 359

E: elaine.sadler6@gmail.com



FACE AND BODY CARE – Martina Gebhardt

Elizabeth King is a Holistic Facialist & Skincare Educator and passionate about care of the skin.

Her extensive knowledge is based on the principle that the skin protects as well as reveals the inner self as it mediates between individual, people and environment.

Working with Martina Gebhardt products and using rhythmical and pulsing movements, the skin and inner self feel met and held, so that radiance can emerge. Elizabeth has particular experience with rosacea, teenage acne as well as irritated, hypersensitive skin conditions.

For further information M: 07504 821 593

E: elizabeth@liv.co.uk

KAIROS REHABILITATION

Anthroposophical Medical Assessment and Therapy Kairos Rehabilitation Trust

For adults & children with long-term conditions which prove hard to treat (may include sleep disturbances, chronic fatigue, anxiety, depression, autistic spectrum disorders, attention deficit disorders, post-traumatic stress & other medically unexplained symptoms.

Both at Kairos, Forum at Greenwich,
Trafalgar Road, London SE10 9EQ
T: 07712 810 108
www.kairosrehabilitation.org.uk

STUDY GROUP

For health professionals, educators and others interested in exploring the human being in health and illness.

Every Monday 6.45pm – 8.15pm with Ingrid Hermansen

For further info, please contact:
Ingrid Hermansen, M: 07712 810 108
E: info@kairosrehabilitation.org.uk



TEMPLE LODGE CHRISTIAN COMMUNITY

For details about events and talks please contact

51 Queen Caroline St, London W6 9QL
E: ccsecretary@btconnect.com T: 020 8748 8388





The National Waldorf Teachers' Conference
Michael Hall School 2019

Growing Points

From Wednesday 10th April
to Friday 12th April 2019 (inclusive)

Sponsored by the Anthroposophical Society in GB

Michael Hall will be hosting the annual Easter Conference for teachers and others engaged or interested in education. The theme is 'Growing Points' and we will be looking at the potential for the future of our education.

For further information and booking please visit
www.michaelhall.co.uk/easterconf-2019
or contact Virginia Westlake by email:
virginia.westlake@michaelhall.co.uk

Keynote Speakers:

Marjatta van Boeschoten, Stephen Holland,
Peter Lutzker & Sven Saar

www.michaelhall.co.uk/easterconf-2019

Kidbrooke Park, Priory Road, Forest Row,
East Sussex, RH18 5JA Registered Charity No 307006

Michael Hall
a Steiner Waldorf School



We are celebrating our
25th Anniversary on
Saturday 6th July!
Check our website for
further details.



StPaul's STEINER SCHOOL

St. Paul's Steiner School is an independent, non-selective and non-denominational school for children aged 3-14 years old and Parent and Child group from 6 months to 3 years old.

*"Receive the children with reverence,
educate them with love, relinquish them in freedom."*

Email: schooloffice@stpaulssteinerschool.org to book a school tour.
St Paul's Steiner School, 1 St Paul's Road, London, N1 2QH

Telephone: 0207 226 4454
www.stpaulssteinerschool.org



The Children's Garden

KINDERGARTEN for children age 3 to 6.

"Children thrive and have great fun as they learn in this nurturing kindergarten. They learn valuable life skills and gain independence through their daily routines." Ofsted – March 1st, 2018

PARENT AND CHILD GROUPS (birth to 3 ½)
Mondays and Thursdays 2.45pm to 4.15pm

Grove Gardens Chapel, Lower Grove Road,
Richmond TW10 6HP



Information

E: regine.childrensgarden@gmail.com
www.thechildrensgarden.org.uk



LONDON STEINER SCHOOL

9 Weir Road, London SW12 0LT

T: 020 8772 3504

E: office@londonsteinerschool.org

www.londonsteinerschool.org



ST. MICHAEL STEINER SCHOOL

Park Road, Hanworth Park,

London TW13 6PN

T: 020 8893 1299

E: info@stmichaelsteiner.hounslow.sch.uk

www.stmichaelsteiner.hounslow.sch.uk



GREENWICH STEINER SCHOOL

Woodlands, 90 Mycenae Road, Blackheath,
London SE3 7SE

T: 020 8858 4404

E: admin@greenwichsteinerschool.org.uk

www.greenwichsteinerschool.org.uk

Healthy Shopping, Healthy Eating, & Health Generally

BIODYNAMIC FARMS

For LONDON MARKETS see websites

Akiki Organics Biodynamic farm

Fruit, veg, eggs, meat, juices & preserves

T: 01905 381420.

E: charbel@akiki.co.uk www.akiki.co.uk

Brambletye Biodynamic Fruit Farm

Fruit, eggs, veg, juices, honey & jams

T: 07867 740 040.

E: steinleenders@gmail.com

www.brambletyefruitfarm.co.uk

Brockman's Farm Biodynamic Growers UK's oldest biodynamic farm

Fruit, vegetables & juice

T: 01227 732 001.

E: perrycourtfarm@gmail.com

www.brockmansfarm.co.uk

Fern Verrow Farm Biodynamic/Demeter Certified Farm

T: 01981 510 288.

E: fernverrow@btopenworld.com

www.fernverrow.com

Jacob's Ladder Farms

Biodynamic & organic produce by small farms in Kent & East Sussex

T: 07565 303 559.

E: jayne@jacobs ladderfarms.co.uk

www.jacobs ladderfarms.co.uk

Mushroom Table

Pioneering Mushroom Growing!

www.mushroomtable.com

T: 01206 231 660.

E: info@mushroomtable.com

www.mushroomtable.com

BIODYNAMIC WINE RETAILERS

Vintage Roots. www.vintageroots.co.uk

Bar Buvette www.barbuvette.co.uk

RESTAURANTS/CAFES USING BIODYNAMIC/ORGANIC PRODUCE

Spring Restaurant. Somerset House,

New Wing, Lancaster Place, London

WC2R 1LA T: 020 3011 0115

Using biodynamic vegetables from

Fern Verrow Farm.

E: press@springrestaurant.co.uk

www.springrestaurant.co.uk

The Hive Wellbeing Biodynamic & Organic Cafe and Natural Wine Bar

286-290 Cambridge Heath Road, London

E2 9DA T: 020 8981 9245

E: info@thehive wellbeing.com

www.thehive wellbeing.com

NATURAL SKINCARE BRANDS USING BIODYNAMIC INGREDIENTS:

Dr Hauschka

www.dr.hauschka.com/en_GB/

Martina Gebhardt

Demeter Certified biodynamic brand

www.liv.co.uk/martina-gebhardt/

Weleda www.weleda.co.uk

HEALTH AND COUNSELLING

Biographical Counselling in London

Giovanna Mabanta MPABC, reg MBACP

Biographical Counsellor T: 07720 783 780

www.biographyworklondon.co.uk

Counsellor, Psychotherapist and Psychophonetics Practitioner

Graham Kennish MBACP

47, Harrington Gardens, SW7 4JU

E: kennish46@gmail.com

T: 07973 680959

Cranio-Sacral Therapy & Remedial Massage

Christa Parkinson

24 Woodland Gardens, Muswell Hill, London

N10 3UA T: 020 8444 6331

Craniosacral Therapist (BCST)

Dagmar Steffebauer Registered at CSTA UK

90 A, The Avenue, Wembley, HA9 9QL.

E: d.steffebauer@gmail.com

Phyto & Aromatherapy

Pamela Tinker Member of the International Federation of Aromatherapists.

T: 07841 904 871

Registered Osteopath & Eurythmy Therapist

Michael Mehta

Hermes Health Limited, Templeton House,

33-34 Chiswell Street, London EC1Y 4SF

T: 020 7638 3202 www.hermeshealth.uk

For further therapies, please see Therapy Centre at RSH on pp. 22/23 of *impulses*.

Events at RSH – At a Glance

For reasons of space only April–Sept 2019 events are included in this overview

APRIL			SG = Study Group	SiA = Spirit in Action	FT = Friday Talks	
Date & Start Times			Weekly from 10.00am-2.00pm Sat			Saturday Biodynamic Market Stall
13	Sat	2.30pm	Start of Conversation and SG: 'Exploring Anthroposophy'			9
30	Tue	7.30pm	More to Life: Spirit and Architecture			6
May						
2	Thu	7.30pm	SiA: The Profundity of Fairy Tales			4
6	Mon	7.00 pm	Start of SG: Karmic Relationships, Volume 1			8
8	Wed	2.00pm	Start of SG: The Riddles of Philosophy			8
8	Wed	7.15pm	Start of SG: Essential Steiner – A Reading and Conversation Group			9
9	Thu	7.30pm	SiA: Esoteric Constitution - Your Seven Bodies			4
10	Fri	7.30pm	FT: Leonardo, his paintings and drawings			12
11	Sat	1.30pm	Workshop - Eurythmy (1)			15
13	Mon	7.00pm	Start of SG: The Temple Legend			8
15	Wed	2.00pm	Start of SG: Background to the Gospel of St Mark			9
16	Thu	7.30pm	SiA: Making and Using the Biodynamic Preparations			4
17	Fri	7.00pm	FT: The Family			10
18	Sat	6.15pm	Eurythmy Studio Performance			15
18	Sat	1.30pm	Workshop - Eurythmy (2)			15
21	Tue	7.15pm	Start of SG: At the Gates of Spiritual Science			8
22	Wed	4.15pm	Start of SaG: The Spiritual Beings in the Heavenly Bodies and the Kingdoms of Nature			9
23	Thu	7.30pm	SiA: Human and Planetary Evolution			5
24	Fri	7.00pm	FT: The Scientific Community			10
28	Tue	7.30pm	More to Life: Who am I? & Who are you? Questions of Gender Identity			6
30	Thu	7.30pm	SiA: Fundamental forces in Humanity and Nature			5
31	Fri	7.00pm	FT: Freedom and Friendship: Society in a Material World			10
June						
1	Sat	1.30pm	Workshop - Eurythmy (3)			15
2	Sun	2.30pm	Workshop Exploring Michael Chekhov's Approach to Acting (1)			15
6	Thu	7.30pm	SiA: Creating Spiritual Community to Meet Early Years Education & the Waldorf Movement			5
7	Fri	7.30pm	FT: Leonardo's life and work			12
8	Sat	1.30pm	Workshop - Eurythmy (4)			15
8	Sat	2.00pm	SG: Mystery Drama Reading			13
9	Sun	2.30pm	Workshop Exploring Michael Chekhov's Approach to Acting (2)			15
13	Thu	7.30pm	SiA: Wisdom of the Bees			5
14	Fri	7.00pm	FT: A Michaelic Approach to Community			11
21	Fri	7.00pm	FT: Earthly and Cosmic Community – Today and for the Future			11
23	Sun	2.00pm	An Introduction to Gardening the Biodynamic Way			13
23	Sun	2.30pm	Workshop Exploring Michael Chekhov's Approach to Acting (3)			15
25	Tue	7.30pm	More to Life: 5G: Cause for Concern			7
28	Fri	7.00pm	FT: Materialism, Social Process and Mental Health			11
July						
5	Fri	7.30pm	FT: Ruskin and Turner			12
12	Fri	7.00pm	FT: The Individual in Community			11
17	Wed	7.15pm	Start of SG: Psychology – A Summer Reading and Conversation Group			9
19	Fri	7.00pm	FT: Working in Community with the Spiritual World			12
28	Sun	11am	Workshop – Parzival Studies			16
29	Mon	9.00am	The Spirit of English – The Matter of Britain and It's Destiny			17
Aug						
21	Wed	10.30am	Exploring Goethe's fairy tale 'The Green Snake and the beautiful Lily'			18
Sep						
7	Sat	11am	The Communion of Eros and the Communion of the Logos			16